

seppi m[®]

MULCHING EQUIPMENT SPECIALISTS

Flail Mulchers
SMW · SMO

Flail Mulchers

20-120 HP



SMO rev cf

50-120 HP Ø max. 7 cm [2.8 inch]

The expert among the lightweight mulchers with reversible linkage

Road sides, meadows, pastures – the SMO machines satisfy the needs of professionals in the most varied situations with an even clean cut.

The machines of this series mulch grass and brushwood up to 7 cm in diameter.

The model **SMO rev cf** has a central 3-point linkage. The mulcher is reversible and can be driven in both direction - front and rear.

Standard version and characteristics

- > Mulches grass and brush up to 7 cm [2.8"]Ø
- > Working speed 3-10 km/h
- > 3 point linkage cat. 2 reversible
- > 1000 rpm gearbox with freewheel and through shaft
- > Belt transmission
- > Adjustable rear hood with rubber protection
- > Front protection with metal flaps
- > Support roller 152 mm Ø
- > Standard rotor with SMO flails

Optional configuration and accessories

- > Rotor with Y flails
- > 540 rpm gearbox
- > Gearbox with automatic inverter and double freewheel
- > Additional 3-point linkage
- > Front attachment
- > Hood with rakes
- > Front protection with chains instead of metal flaps
- > Additional front rubber flap
- > Metal front wheels
- > Rubber wheels instead of roller
- > Roller scraper
- > Attachments for undercanopy maintenance (details see separate brochure)



[YouTube www.youtube.com/seppimulcher](https://www.youtube.com/seppimulcher)

Tools

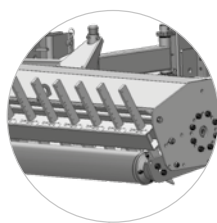


Specifications • SMO rev cf

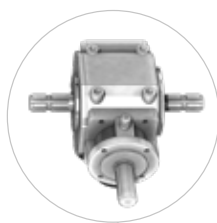
		150 [59]	175 [69]	200 [79]	225 [89]	250 [98]
Working width	cm [inch]	150 [59]	175 [69]	200 [79]	225 [89]	250 [98]
Overall width	cm [inch]	165 [65]	190 [75]	215 [85]	240 [95]	265 [100]
Depth	cm [inch]	120 [47]	120 [47]	120 [47]	120 [47]	120 [47]
Height	cm [inch]	120 [47]	120 [47]	120 [47]	120 [47]	120 [47]
Weight (base value)	kg [lb]	480 [1,050]	550 [1,210]	600 [1,310]	650 [1,430]	710 [1,560]
Belts	qty	4	4	4	5	5
Flails	qty	15	18	21	24	27
Y flails	qty	27	33	39	45	x
Nominal tractor power	HP	50-100	50-100	50-100	50-120	50-120

S420 rev cf · features

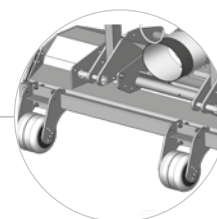
Robust reinforced double wall chassis made of high tensile steel S420.



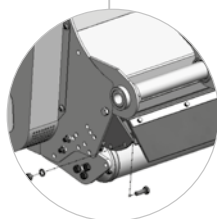
Rake hood complete with rakes (option)



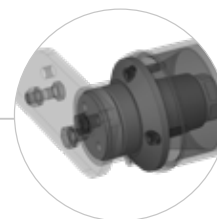
Gearbox for front and rear attachment



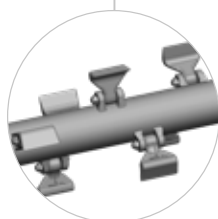
Metal front wheels (option)



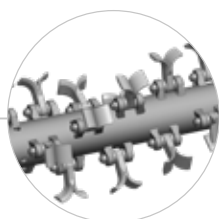
Adjustable hood to set the degree of mulching



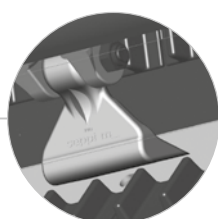
Adjustable support roller, Reinforced bearing and roller



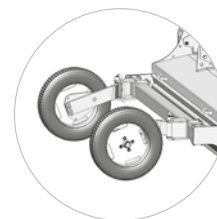
Standard rotor with SMO flails



Optional rotor with Y flails



Tempered counter cutters for a perfect mulching result



Rubber gauge wheels for uneven ground (instead of roller)