

seppi m[®]

MULCHING EQUIPMENT SPECIALISTS

Flail Mulchers
SMW · SMO

Flail Mulchers

20-120 HP



SMWA rev cf

30-90 HP Ø max. 5 cm [2 inch]

Reversible linkage for front and rear

Agriculture or greenspace maintenance? All easy ...
– the mulchers of the SMW series mulch grass, prunings and bushes up to 5 cm [2"] in diameter.

The SMWA rev cf standard version has manual side shift with a two position bolt-on hitch: central and 17 cm [6.7"] to the right.

Standard version and characteristics

- > Mulches grass and brush up to 5 cm [2"]Ø
- > Working speed 3-10 km/h
- > 3 point linkage cat. 1&2 reversible
- > Side shift with 2 positions: central and 17 cm [6.7"] to the right
- > 540 rpm gearbox with freewheel and through shaft
- > Belt transmission
- > Adjustable rear hood with rubber protection
- > Front protection with metal flaps
- > Support roller 152 mm Ø
- > Standard rotor with SMW flails

Optional configuration and accessories

- > Rotor with Y flails
- > 750 or 1000 rpm gearbox
- > Gearbox with automatic inverter and double freewheel
- > Additional 3-point linkage
- > Front attachment
- > Hood with rakes
- > Metal front wheels
- > Front protection with chains instead of metal flaps
- > Additional front rubber flap
- > Roller scraper
- > Attachments for undercanopy maintenance (details see separate brochure)



www.youtube.com/seppimulcher

Tools

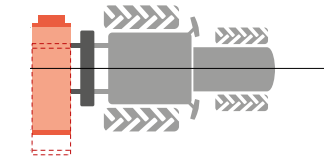
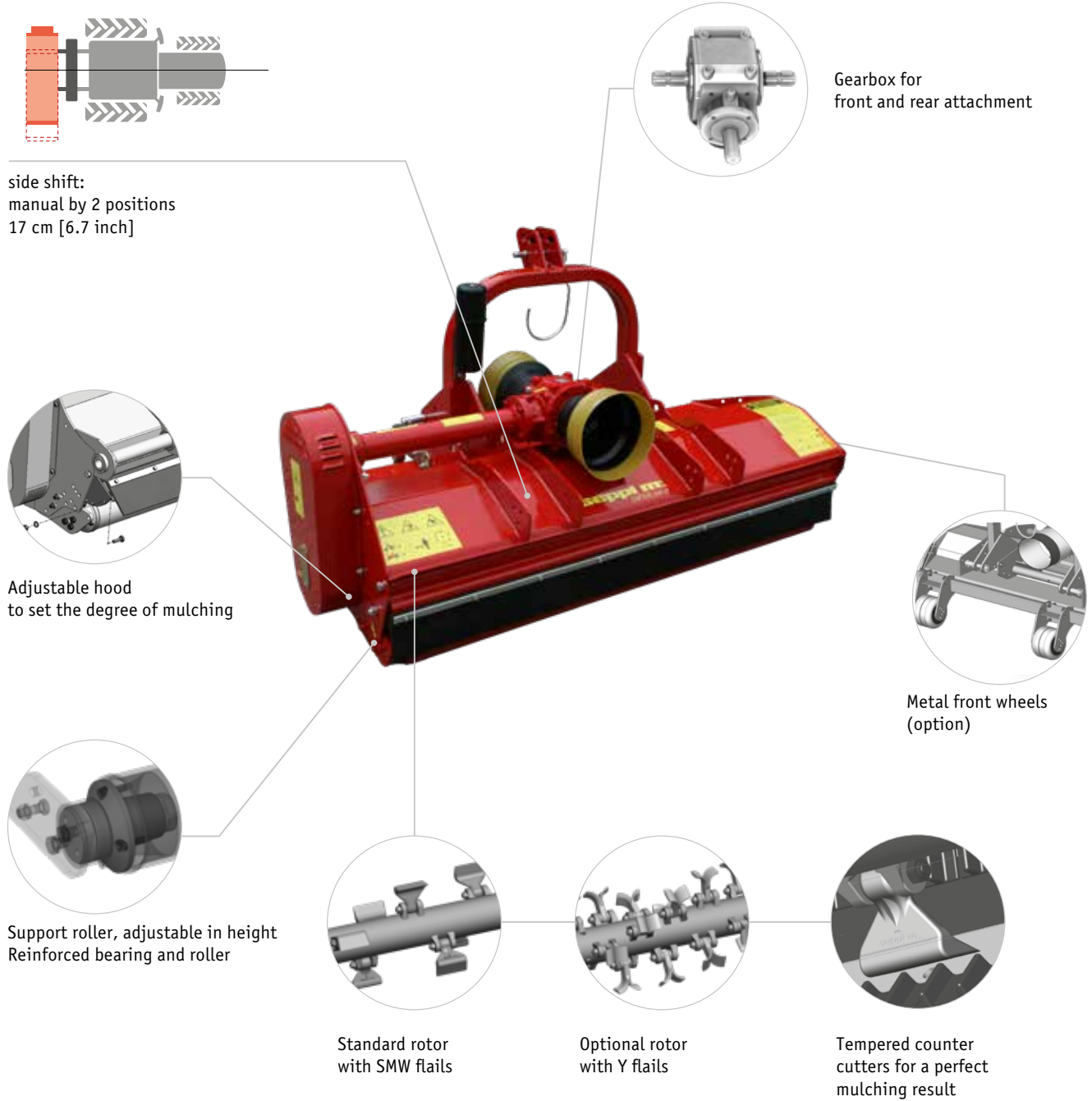


Specifications · SMWA rev cf

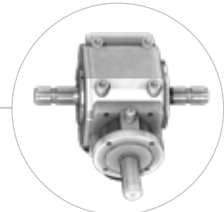
		95 [37]	105 [41]	115 [45]	125 [49]	135 [53]	145 [57]	155 [61]	175 [69]	200 [79]	225 [89]
Working width	cm [inch]	95 [37]	105 [41]	115 [45]	125 [49]	135 [53]	145 [57]	155 [61]	175 [69]	200 [79]	225 [89]
Overall width	cm [inch]	107 [42]	117 [46]	127 [50]	137 [54]	147 [58]	157 [62]	167 [66]	187 [74]	212 [84]	237 [93]
Depth	cm [inch]	90 [35]	90 [35]	90 [35]	90 [35]	90 [35]	90 [35]	90 [35]	90 [35]	90 [35]	90 [35]
Height	cm [inch]	95 [37]	95 [37]	95 [37]	95 [37]	95 [37]	95 [37]	95 [37]	95 [37]	95 [37]	95 [37]
Weight (base value)	kg [lb]	315 [690]	335 [740]	345 [760]	355 [780]	385 [850]	415 [910]	465 [1030]	485 [1070]	515 [1140]	535 [1180]
Belts	qty	3	3	3	3	3	3	3	4	4	4
Flails	qty	9	9	12	12	12	15	15	18	21	24
Y flails	qty	15	18	21	24	24	27	27	33	39	45
Nominal tractor power	HP	30-65	30-65	30-65	30-65	30-65	30-65	30-65	40-90	40-90	40-90

SMWA rev cf · features

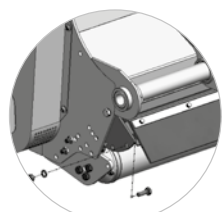
Robust reinforced double wall chassis made of high tensile steel S420.



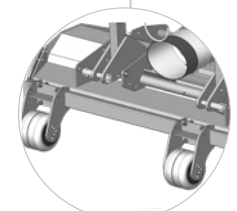
side shift:
manual by 2 positions
17 cm [6.7 inch]



Gearbox for
front and rear attachment



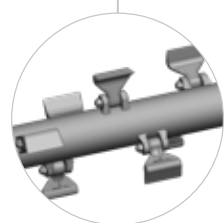
Adjustable hood
to set the degree of mulching



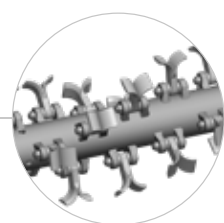
Metal front wheels
(option)



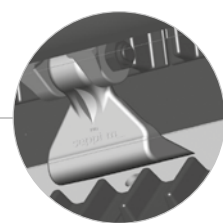
Support roller, adjustable in height
Reinforced bearing and roller



Standard rotor
with SMW flails



Optional rotor
with Y flails



Tempered counter
cutters for a perfect
mulching result