

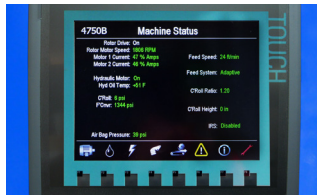
4750B Electric Horizontal Grinder

The 4750B Electric Horizontal Grinder makes sense for permanent or semi-permanent operations.



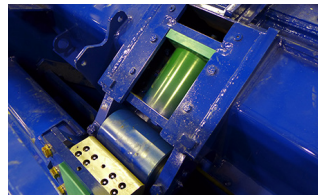
4750B Stationary Option

4750B Wheeled Option



The Siemens PLC Control System

Easily monitor system performance. The fully integrated, industrial grade Siemens PLC interface is user-friendly and customizable to your application.



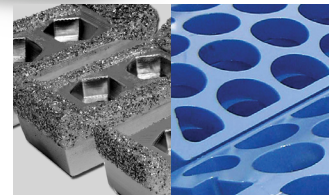
The Impact Release System Protects Your Investment

Peterson's patented Impact Release System's latching detent system (cover removed) provides uniform grinding and protection from contaminated feedstock, a feature unique to Peterson grinders.



Maximum Power With High Torque Electric Motors

The 4750B's industrial grade electric motors have a rugged cast-iron frame and a dynamically balanced die-cast aluminum rotor for durability and long wear.



Use Peterson Bits and Grates for The Best Quality Product

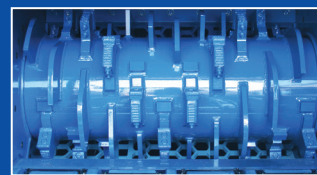
Peterson offers a wide variety of durable, long-lasting bits and grates to enable you to produce exactly the products your customers demand.

The Peterson 4750B Horizontal Grinder is the electric powered version of the popular 4700B. Highly productive and efficient, it hits the "sweet spot" in the Peterson grinder product line. Powered by twin 400 HP (300 kW) electric motors with either VFD or soft starter control packages, the 4750B is ideal for stationary or semi-stationary operations. Electric power costs are typically much lower than diesel fuel costs, and in today's changing economy, electric power may be the answer to increasing your profits.

With an internal drive compression roll and a 60 x 37½ inch (152 x 95 cm) feed opening, the 4750B can handle the requirements of your daily grind.

The 4750B features Peterson's Adaptive Control System, which controls all components of the feed system to optimize output. This system senses variations in motor load and adapts the operating parameters to produce the maximum amount of material at all times.

Peterson's three-stage grinding process with an up turning rotor and large grate area enables the 4750B to produce materials to exact specifications. The quick-change multiple grate system makes it easy to customize grate configurations



The 4750B features a drum (left photo) or pinned (right photo) rotor.



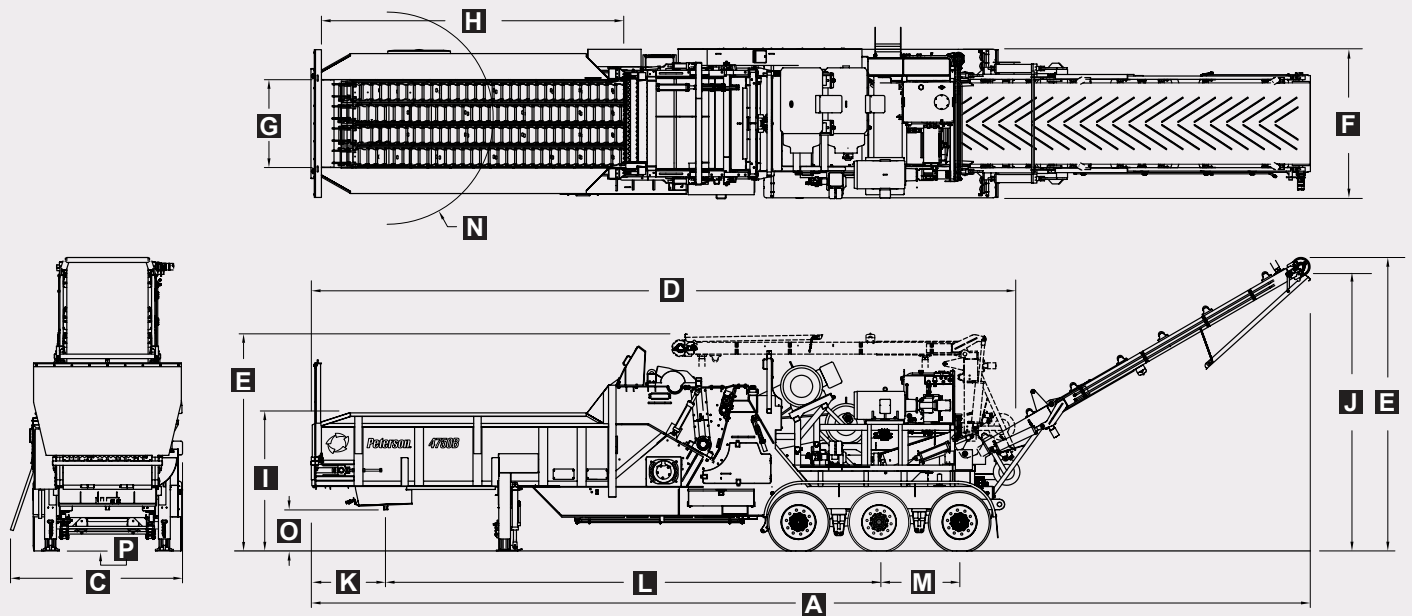
to produce a wide variety of finished materials. Grates are removed through an access door on the side wall.

Since 1981, Peterson has specialized in the developing of delivery and processing equipment that turns low-grade organic materials into high value products.



Peterson
an Astec Industries Co.

4750B Views



4750B Specifications

General Dimensions

A Operating Length	56'-4" (172 m)
B Operating Height	16'-6½" (504 cm)
C Operating Width	9'-8½" (296 cm)
D Travel Length	39'-8¾" (1211 cm)
E Travel Height	12'-3½" (375 cm)
F Travel Width	8'-6" (259 cm)
G Feed Conveyor Width	60" (152 cm)
H Hopper Length	16'-11" (516 cm)
I Hopper Height	7'-9" (236 cm)
K Front to 5th Wheel	4'-2½" (128 cm)
L 5th Wheel to Center Axle	27'-9¾" (848 cm)
M Axle Spacing	4'-6½" (138 cm)
N 5th Wheel Clearance Radius	6" (183 cm)
O 5th Wheel Height	49'-¾" (1684 cm)
P Ground Clearance	10" (25 cm)

Weights

Machine Weight*	64,000 lbs (29 029 kg)
Tri-Axle Weight*	44,000 lbs (19 958 kg)

*depending on configuration

Powertrain

Electric Power	USA-460 volt, 60Hz, 3-phase electric Europe-400 volt, 50Hz, 3-phase electric Canada-575 volt, 60Hz, 3-phase electric
Rotor Drive Motors	crusher duty, 2 x 400 hp (300 kW)
Auxiliary Motor (for hydraulic functions)	high efficiency 100 hp (75 kW)
Main Hydraulic Tank Capacity	105 gal (397 L)

Feed System

Hopper Capacity	9 yd ³ (6.88 m ³)
Feed Chain	4 sections, full hopper width
Feed Opening (width x height)	60" x 37½" (152 x 95 cm)
Compression Roll Diameter (tip to tip)	33½" (85 cm)

Rotor

Rotor Shaft Size	47/16" (113 mm) @ bearing, 5¾" (146 mm) @ center
Rotor Width	63½" (161 cm)
Rotor Speed	1050 rpm @ 2100 rpm (engine)
Rotor Diameter	38" (96.5 cm)
Number of Bits	drum rotor-22, pinned rotor-20
Bit Size (width x height)	2¾ x 5" (7 x 12.7 cm)

Grate Data

Number of Grate Sections	4
Total Grate Area	4023 in ² (25 955 cm ²)
Rotor Coverage	187 degrees
Grate Thickness	1" (2.54 cm) or 1¼" (3.12 cm)

Discharge System

Discharge Conveyor Width	54" (137 cm)
Conveyor Speed	450 ft/min (137.2 m/min)

Optional Equipment

Asphalt Shingle Grinding Package, Centralized Greasing, Grate Hangers

Production (with two 400 hp motors)

Greenwaste	360 yds ³ /95 US tons (275 m ³ /86 metric tons) per hour
Scrap Board	425 yds ³ /65 US tons (325 m ³ /59 metric tons) per hour

(Actual output may vary due to moisture content, material density, material size, support equipment, and grate size. Production rates are based on grinding 50 minutes per hour.)

Specifications subject to change without notice

PETERSON an Astec Industries Company

PO Box 40490 • Eugene, OR 97404 • Tel 800.269.6520 Fax 541.689.0804 • www.petersoncorp.com

