



FINMAC
F16

FINMAC

Finmac F16- productivity, already on the first day of use

Finmac F16- productivity, already on the first day of use

The Finmac F16 is a Finnish, electrical, radio controlled demolition machine for contractors, who require that their machine is reliable and efficient from the very first day.

Drivability

Control of the F16 is with the aid of Can Open system by radio control or alternatively through a cable arrangement, when the use of a radio is not possible. The remote control improves occupational safety and efficiency. Due to the Can Open electrical system, the cables between the upper and lower carriages, the possible site for faults, has been significantly reduced. The logical and easy control system has been developed with Finnish field specialists and will immediately feel familiar in the hands of professionals. The speeds of all the operations are able to be adjusted. The hold-operation is standard. The use of a camera is also possible.



Due to its low centre of gravity, the F16 is stable and safe to drive. The F16 is able to pass through normal doors (> 800 mm), and climbing angle is 30° and the machine also climbs stairs agilely. The wider width option of the tracks ensures a steady drive on inclined and uneven terrain. The standard material of the lower carriage's tracks is rubber. Also available, as additional equipment, are steel tracks that are installed direct to the standard track frame. Due to simultaneous driving and use of the beam, the F16 could even climb a tree. Parallel driving with the beam is also possible. Due to the due signal, the information sent by the machine is readable on the remote control. The outdoor, unobstructed range of the radio signal is 800m.

Efficiency

The upper carriage of the F16 can rotate a full 360°. A whole range of tools such as hydraulic hammers, concrete crushers, bucket, scoop, grapples etc can be quickly attached to the F16 – in practice, almost anything can. A telescope beam and work lamps for installation on the beam are available as additional equipment. Electrical motor alternatives 11 kW, 15 kW, 18,5kW and the energy saving motors are options that make the machine useful for any customers' needs. Please contact Finmac for more information about individual solutions, to ease the daily tasks of professionals.

The lower and upper carriages of the F16 have their own separate hydraulic packages. There are lifting hooks at the corners of the machine. The transport dimensions of the F16 is 2257 mm length, 1550 mm height and approximate weight of 1690 kg making it easy to move from one work site to another, even on a trailer. As part of the efficiency, we also offer user and service training either in Vaasa or at the client's own location.



Durability

In the design of the F16, the primary aim was to attain the best possible reliability and serviceability. The machine covers and tops are steel plates. All the cylinders are generously sized. The cylinders and hoses of the beam are protected and not susceptible to blows or dents. The series of leads and the hoses and hose protectors are head resistant.

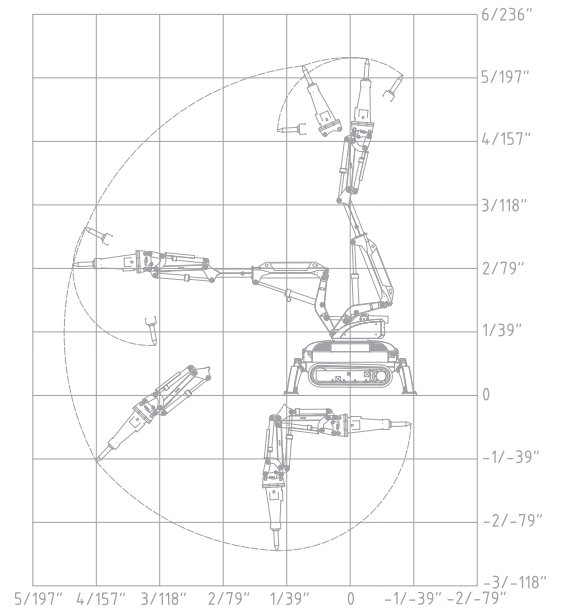
Serviceability

The operation of the F16 is computer controlled and all its serviceable locations are easily reached. The information on the machine's use and driving plus the history of faults and alarms can be saved into memory. An Ethernet-interface is an additional attachment for linking to a computer.

The F16 has a one year guarantee. In the event of some problems, we offer first class service and after sales service, a detailed maintenance agreement plus a round-the-clock help hotline.

The machine's standard components come from renowned manufacturer which ensures an advantageous, quick and prompt delivery of spare parts. A Finmac client is never left on their own.

Finmac F16 is a high standard Finnish export product without compromise.



The client is the focal point of our whole operation

FINMAC DEMOLITION OY was founded in 2006. Our aim is to aid demolition contractors in their demanding tasks. We design, manufacture and market high standard, reliable and efficient demolition machines and equipment for contract professionals.

As a company, Finmac concentrates its efforts so that the client contractors can begin productive operations immediately when they first start the machine. The foundation for our product development and technology, is that the machine only stops when the user so desires.

We aim for the best possible durability and never compromise on the quality and structure of the components. On the other hand, our own broad manufacturing makes it possible to have competitively priced machines, in addition to short and reliable delivery times.

All the standard parts, such as valves and pumps, come from leading and renowned manufacturers in the field.

Finmac's product development, marketing and administration operations are located in Vaasa's Airport Park, from where services are delivered to the rest of the world.

The manufacturing and assembly of the machines takes place in Vaasa.

The philosophy of Finmac is simple: the client is the focal point of our whole operation.

FINMAC

FINMAC DEMOLITION OY
P.O.BOX 810
AIRPORT PARK, FUTURA 1
FI-65101 VAASA

TEL. + 358 20 718 1500
FAX + 358 20 718 1501
WWW.FINMAC.FI